

# **Appendix B**

## **Environmental Protection (Darling Range Bauxite Mining Proposals) Exemption Order 2023**

**Alcoa Monthly Report**  
**Clause 10**

April 2025



# Monthly Reporting Dashboard – Page 1





## Section 10 Monitoring Potential Drainage Incidents

Turbidity Data		Drainage Incidents	
Site	No. Active Monitors <sup>1</sup>	Site	No. Events (Apr-25) <sup>2</sup>
Huntly	39	Huntly	0
Willowdale	4	Willowdale	0
<b>Total</b>	<b>43</b>	<b>Total</b>	<b>0</b>

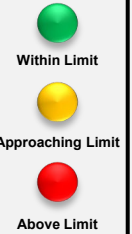
<sup>1</sup> Refers only to monitors located areas covered by the Exemption Order.

<sup>2</sup> Potential Events - Currently being investigated in accordance with section 6(2) of the Exemption Order to determine whether any of the events were mining related.

## Section 2 – Clause 10 2(c) (i) Production and Exploration Summary

Production (HUN and WDL)	Month (Apr-25)	YTD (CY)	Limit	Status
Production Tonnes Huntly	1.4	5.6		
Production Tonnes Willowdale	0.8	3.6		
<b>Total Bauxite Production Tonnes</b>	<b>2.2</b>	<b>9.2</b>	<b>38 MT</b>	
Exploration	Month (Apr-25)	YTD (CY)	Limit	Status
<b>Total Exploration Holes</b>	<b>6,297</b>	<b>27,180</b>	<b>105,000</b>	

### Legend



## Section 3 Clause 10 2(c) (i) and Clause 10 2(c) (iii) Activities Summary and Forecast

Area	April 2025			May 2025			June 2025		
	*Cleared	Stabilised	Seeded	*Clearing	Stabilised	Seeded	*Clearing	Stabilised	Seeded
<b>Huntly</b>									
<b>Total HUN Mine Disturbance Footprint (ha)</b>	<b>0.08</b>	<b>18.87</b>	<b>209.78</b>	<b>15</b>	<b>0</b>	<b>0</b>	<b>10</b>	<b>0</b>	<b>0</b>
<b>Willowdale</b>									
<b>Total WDL mine disturbance footprint (ha)</b>	<b>0</b>	<b>69.48</b>	<b>18.96</b>	<b>0</b>	<b>0</b>	<b>10</b>	<b>0</b>	<b>0</b>	<b>0</b>

### Definitions

- Cleared – disturbance to native vegetation and other flora
- Stabilised– in relation to an area that has been disturbed, means carry out landscaping, ripping and other appropriate operations to prevent erosion of sediment, promote infiltration and manage surface water runoff
- Seeded – landform established and seeding complete

\* Clearing only considers completed hectares

# Monthly Reporting Dashboard – Page 2

## Section 4 – Clause 2(c) (ii) Activities Ceased during the Period for Huntly

Area	April 2025		
	Haul Roads <sup>(a)</sup>	Infrastructure <sup>(b)</sup>	Mining
Within 1km Reservoir (ha)	0	0	0
Serpentine Pipehead Dam Catchment (ha)	0	0	0
Within RPZ and >16% average slope (ha)	0	0	0
Within 10m of BC nesting/significant trees (ha)	0	0	0

### Definitions

**(a)** Haul roads includes road infrastructure

**(b)** Infrastructure Includes drainage control, mining and monitoring infrastructure

Maps for Huntly

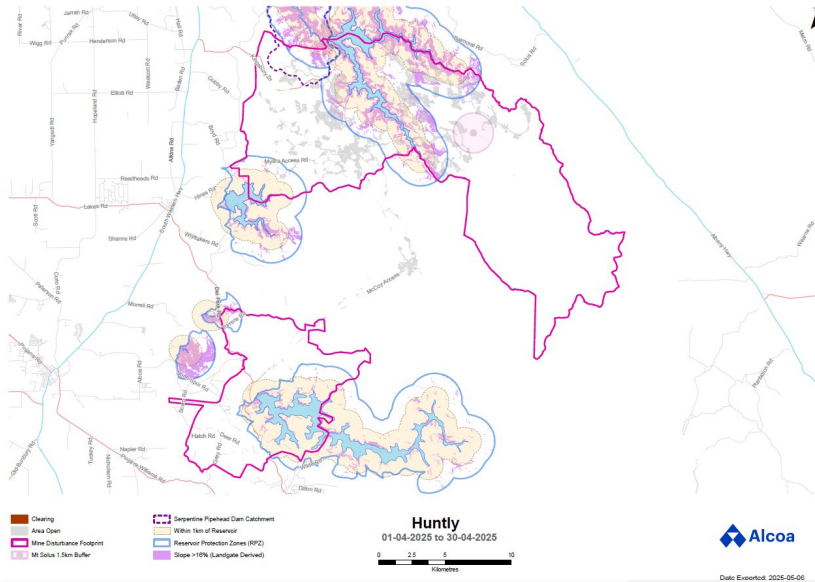
No cessation activities to report this month

Maps for Willowdale

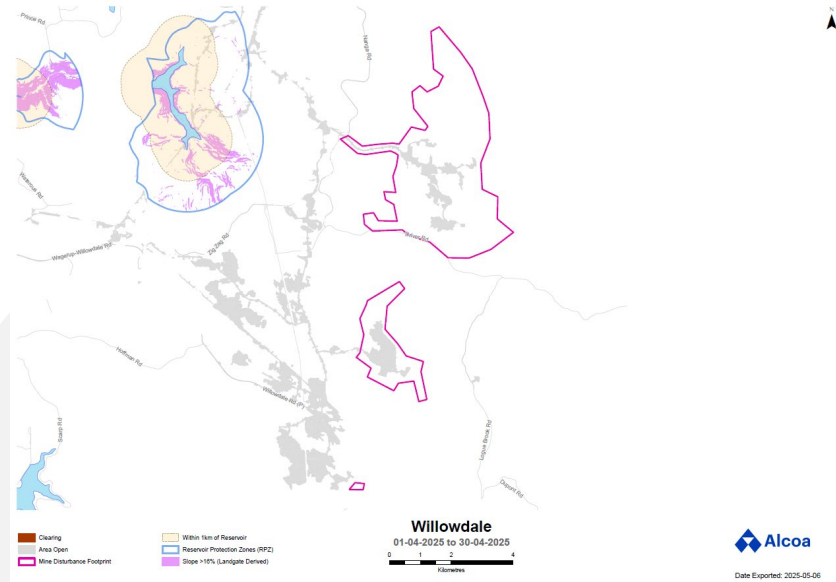
Cessation of mining activities in the above-mentioned areas is not applicable to the Willowdale mine

# Appendix A – Monitoring Results

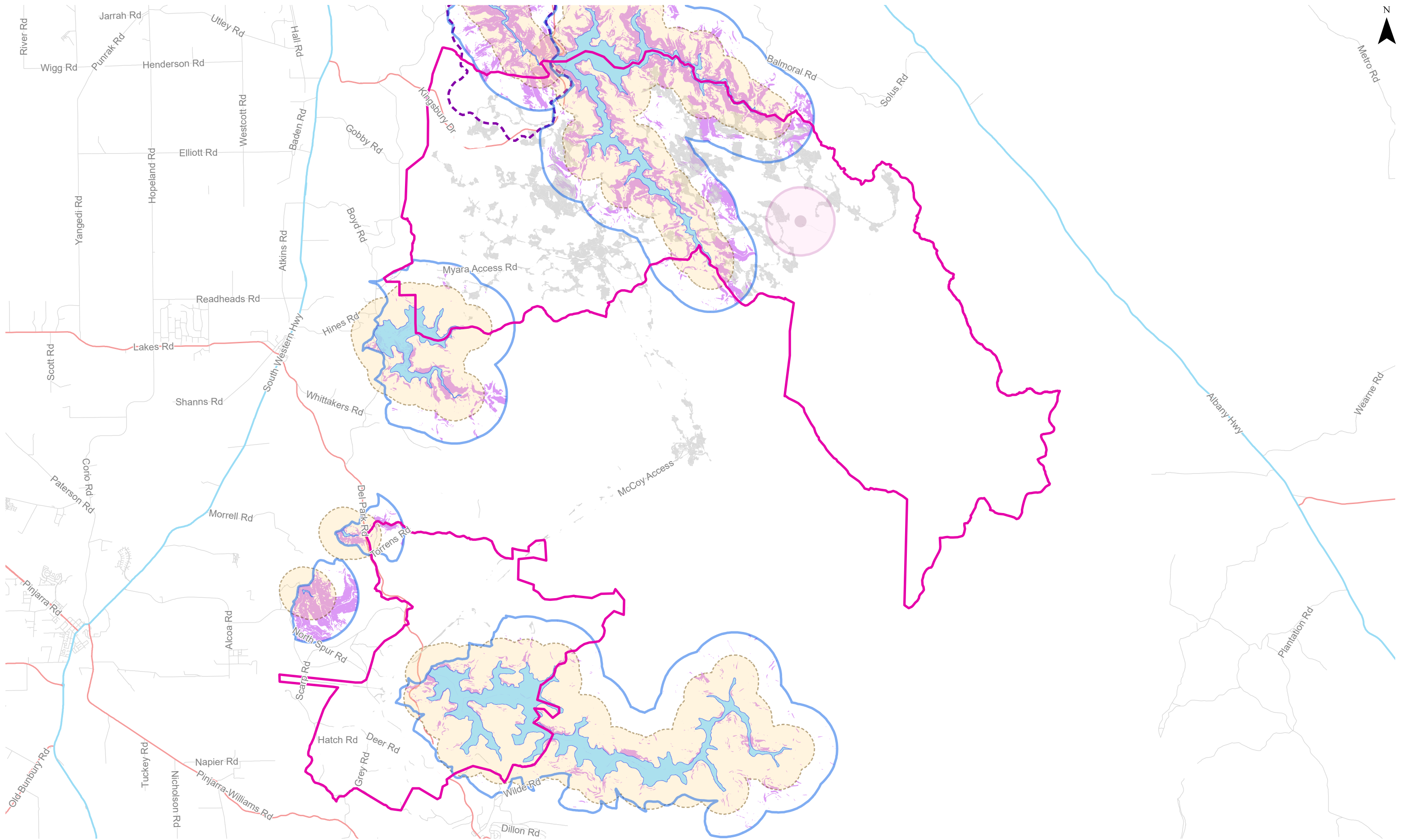
Huntly











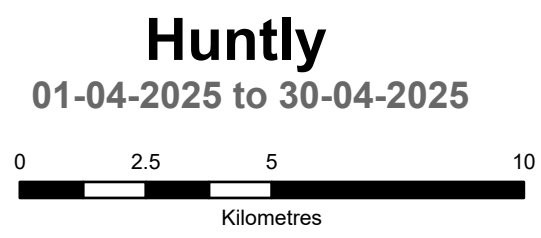
Willowdale

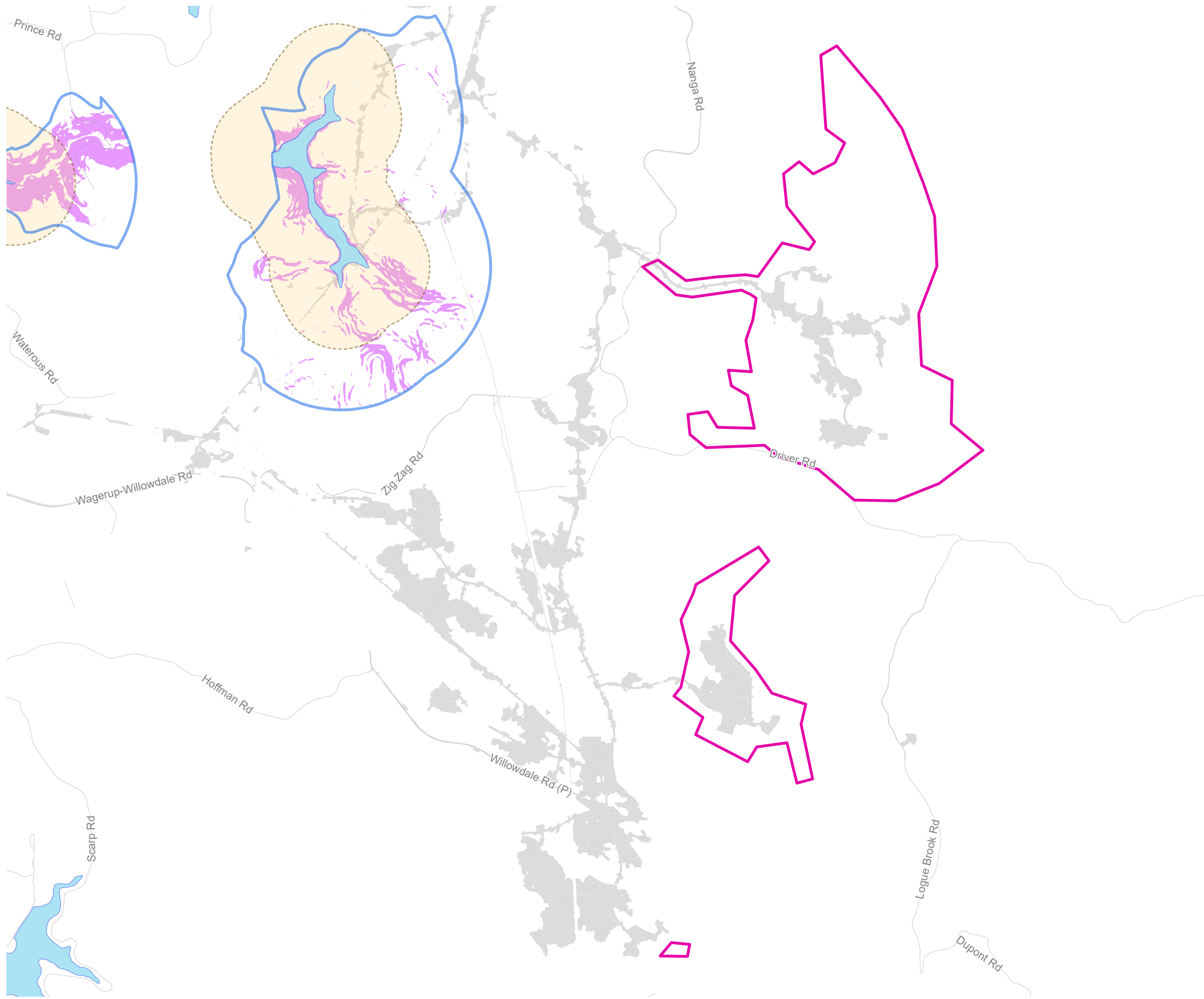






- |  |                            |   |                                   |
|--|----------------------------|---|-----------------------------------|
|  | Clearing                   |  | Serpentine Pipehead Dam Catchment |
|  | Area Open                  |  | Within 1km of Reservoir           |
|  | Mine Disturbance Footprint |  | Reservoir Protection Zones (RPZ)  |
|  | Mt Solus 1.5km Buffer      |  | Slope >16% (Landgate Derived)     |





- Clearing
- Area Open
- Mine Disturbance Footprint

- Within 1km of Reservoir
- Reservoir Protection Zones (RPZ)
- Slope >16% (Landgate Derived)

# Willowdale

01-04-2025 to 30-04-2025

0

1

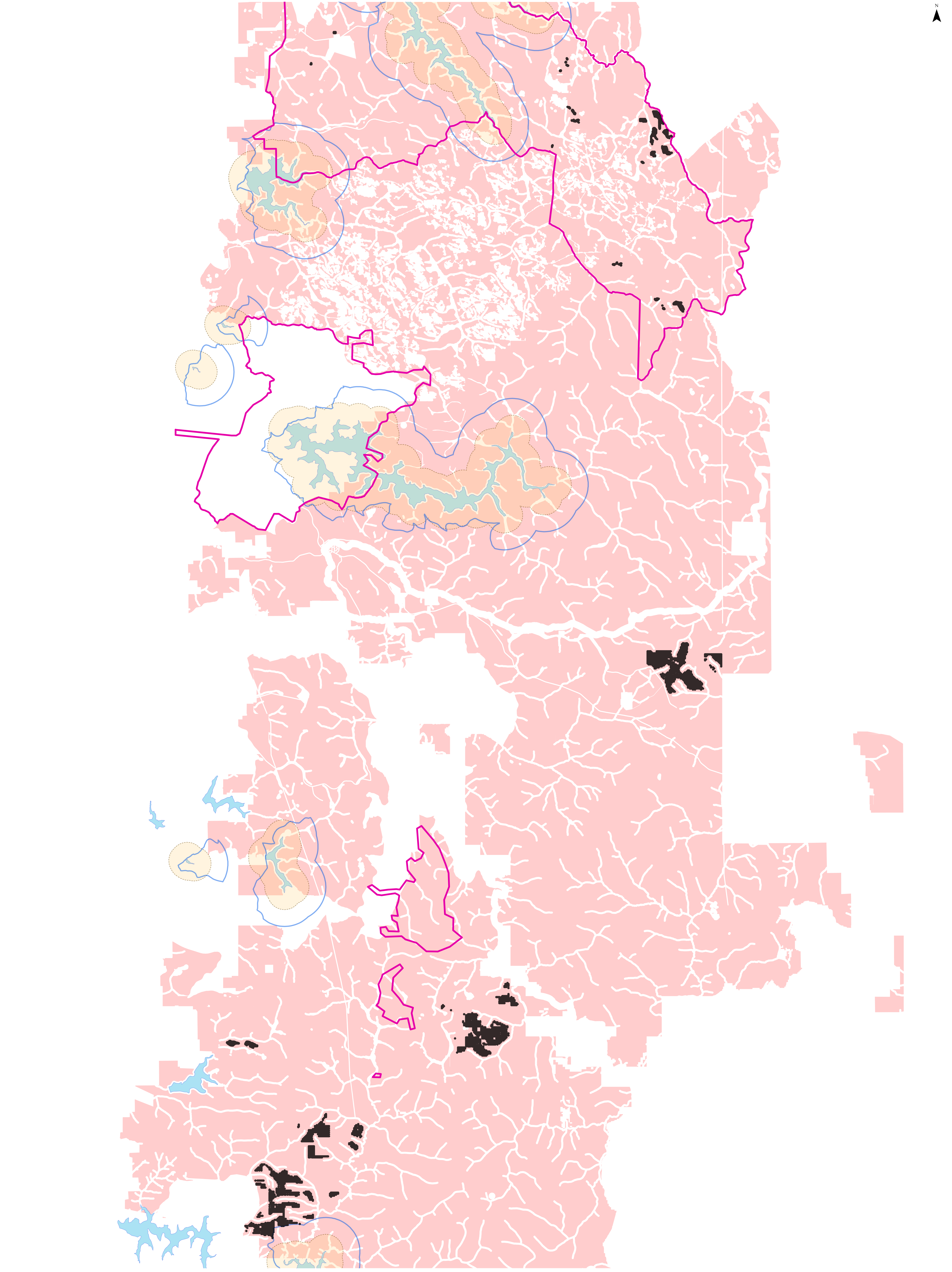
2

4

Kilometres







- Exploration Drill Holes
- Exploration Disturbance Footprint
- Mine Footprint
- Within 1km of Reservoir
- Reservoir Protection Zones (RPZ)

**Exploration**  
01-04-2025 to 30-04-2025

0 1.5 3 6  
Kilometres



Date Exported: 2025-05-06