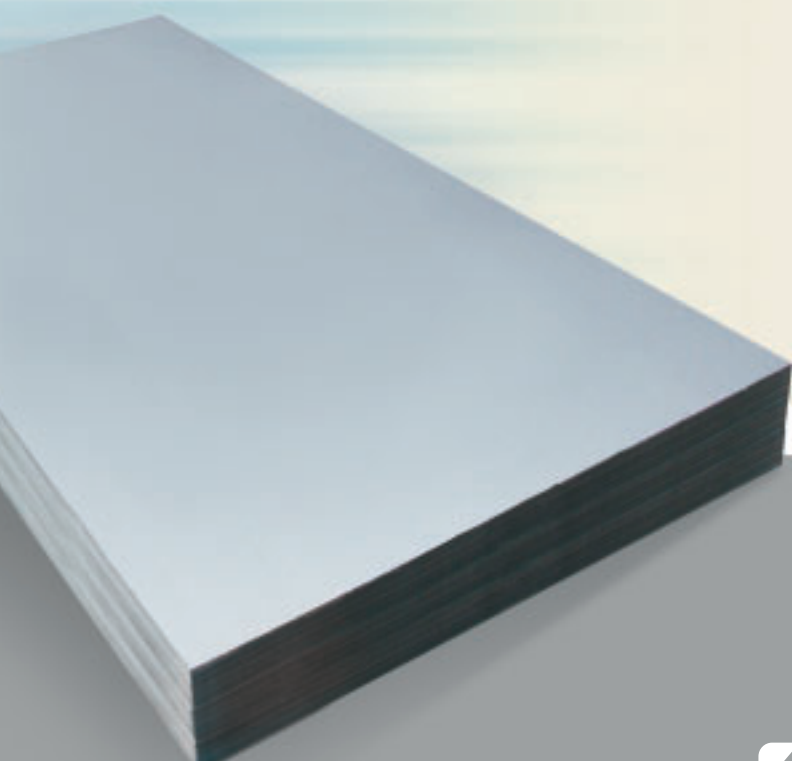


sheet and shate

sheet and shate

Alcoa produces sheet and shate products in a wide range of alloys and sizes, using several cut-to-length lines throughout our network of European plants. Although our processes are based around exceeding the requirements of European Standards (EN), other specifications, including customer specific requirements, are available on request. Our sheet and shate products are widely used in automotive and commercial road transport, building and construction, including aluminium sidings and a wide variety of other industrial fields, such as electrical applications.



sheet and shate technical data

ALLOYS

- EN AW 1050A, 1200
- EN AW 3003, 3103, 3004, 3005, 3105A
- EN AW 5005, 5052, 5083, 5086, 5182, 5251, 5454, 5754
- EN AW 6061, 6082

CHEMICAL COMPOSITION According to EN 573-3

MECHANICAL PROPERTIES According to EN 485-2

SIZES RANGE

Thickness range (mm)	Width range (mm)	Length range (mm)
0.4-1.0	800-1670	1000-6000
1.0-3.0	700-2200	700-9000*
3.0-5.0	700-2200	700-9000**
5.0-6.0	800-2200	800-9000**
6.0-8.0	1000-2200	800-9000

Please note

* Between width 800-1000 mm, maximum length is 6000 mm

** Between width 800-1000 mm, maximum length is 8000 mm

TOLERANCES According to EN 485-4

SURFACE QUALITY

- Mill finish
- Degreased - thickness 0.5-3.0 mm
- PVC film coated - one or both sides - thickness 0.8-3.0 mm; top side only - thickness 3.0-8.0 mm

CERTIFICATION

- ISO 9001 certified quality standards
- ISO 14001 certified environmental standards

In addition, quality certification to other standards can be given. For example, ISO TS 16949 for the automotive industry; shipbuilding classification society approval, such as DNV, TUV and Lloyds Rules for marine applications.