

Features

- Sliding panels are 4-1/2" deep with 7/8" or 3-1/8" vertical stiles, 3" top and 5-3/4" bottom rails
- Screw spline fabrication
- Extruded track incorporates a drain tube on exterior applications
- 1/4" glazing
- Permanodic® anodized finishes in 7 standard choices
- Painted finishes in 42 standard choices and unlimited custom choices

Optional Features

- Incorporation of 190 narrow stile, 350 medium stile or 500 wide stile pairs of entrances

Product Applications

- The 1070 Sliding Mall Front consists of a single track with parallel stacking for interior and exterior applications. With optional incorporation of swing entrances, it is ideally suited for monumental applications such as entrances to shopping malls, large moving walls or storefronts, automobile showrooms and seasonal open front merchandising.

For specific product applications,
Consult your Kawneer representative.

Laws and building and safety codes governing the design and use of glazed entrance, window, and curtain wall products vary widely. Kawneer does not control the selection of product configurations, operating hardware, or glazing materials, and assumes no responsibility therefor.

Kawneer reserves the right to change configuration without prior notice when deemed necessary for product improvement.

© Kawneer Company, Inc., 2008

Architects – Most extrusion and sliding door types illustrated in this catalog are standard products for Kawneer. These concepts have been expanded and modified to afford you design freedom. Some miscellaneous details are non-standard and are intended to demonstrate how the system can be modified to expand design flexibility. Please contact your Kawneer representative or Kawneer’s Architectural Services Team for further assistance.

PICTORIAL VIEW 4

ELEVATION / VERTICAL SECTION DETAILS 5

HORIZONTAL SECTION DETAILS 6

STACK AREA LAYOUT 7

SIZE LIMITS 8

PRODUCT LIMITATIONS AND GENERAL INFORMATION 9

HARDWARE 10

Laws and building and safety codes governing the design and use of glazed entrance, window, and curtain wall products vary widely. Kawneer does not control the selection of product configurations, operating hardware, or glazing materials, and assumes no responsibility therefor.

Kawneer reserves the right to change configuration without prior notice when deemed necessary for product improvement.
© Kawneer Company, Inc., 2008

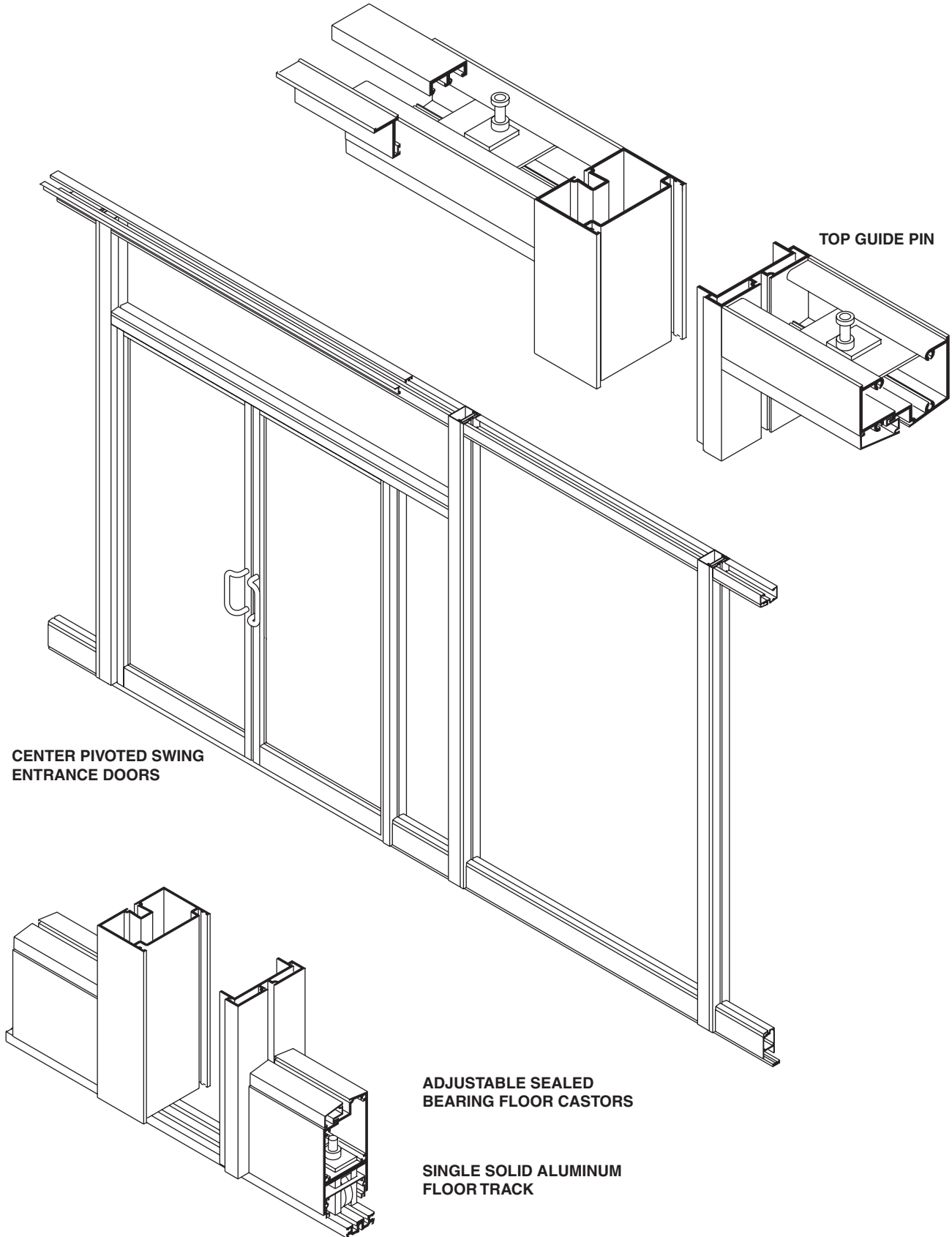
LAWS AND BUILDING AND SAFETY CODES GOVERNING THE DESIGN AND USE OF GLAZED ENTRANCE, WINDOW, AND CURTAIN WALL PRODUCTS VARY WIDELY. KAWNEER DOES NOT CONTROL THE SELECTION OF PRODUCT CONFIGURATIONS, OPERATING HARDWARE, OR GLAZING MATERIALS, AND ASSUMES NO RESPONSIBILITY THEREFOR.

Metric (SI) conversion figures are included throughout these details for reference. Numbers in parentheses () are millimeters unless otherwise noted.

The following metric (SI) units are found in these details:

- m – meter
- cm – centimeter
- mm – millimeter
- s – second
- Pa – pascal
- MPa – megapascal

Kawneer reserves the right to change configurations without prior notice when deemed necessary for product improvement.



TOP GUIDE PIN

CENTER PIVOTED SWING
ENTRANCE DOORS

ADJUSTABLE SEALED
BEARING FLOOR CASTORS

SINGLE SOLID ALUMINUM
FLOOR TRACK

Laws and building and safety codes governing the design and use of glazed entrance, window, and curtain wall products vary widely. Kawneer does not control the selection of product configurations, operating hardware, or glazing materials, and assumes no responsibility therefor.

Kawneer reserves the right to change configuration without prior notice when deemed necessary for product improvement.
© Kawneer Company, Inc., 2008

SCALE 3" = 1'-0"

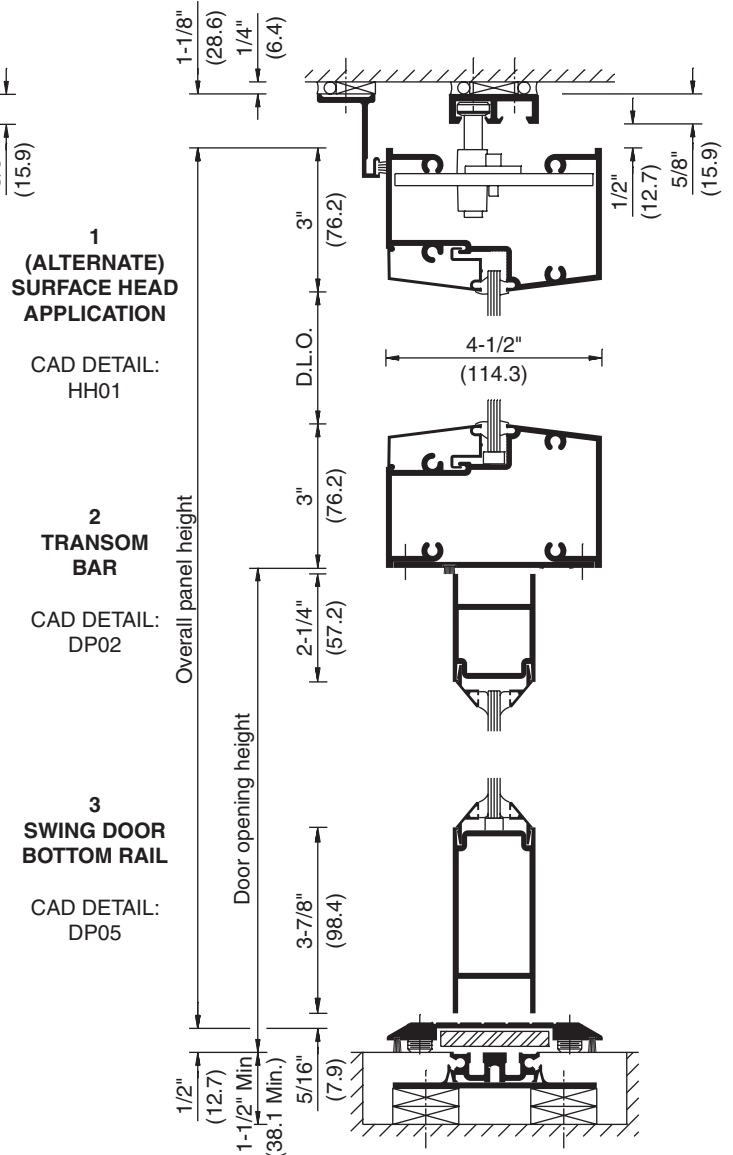
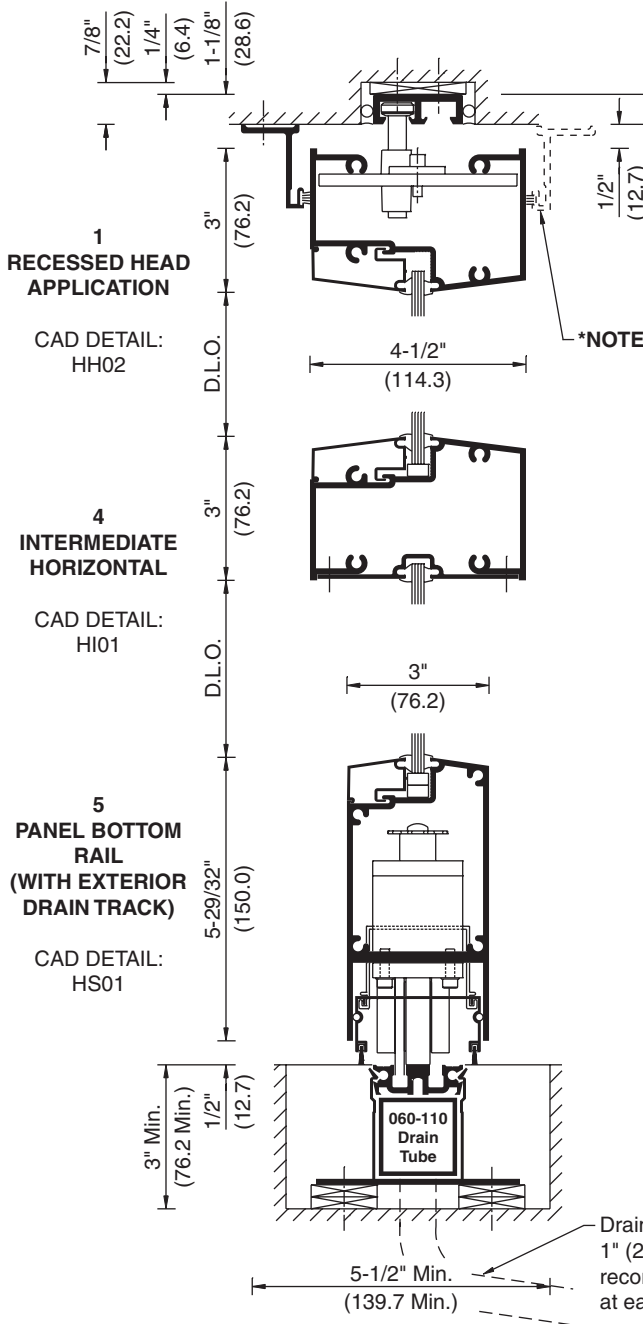
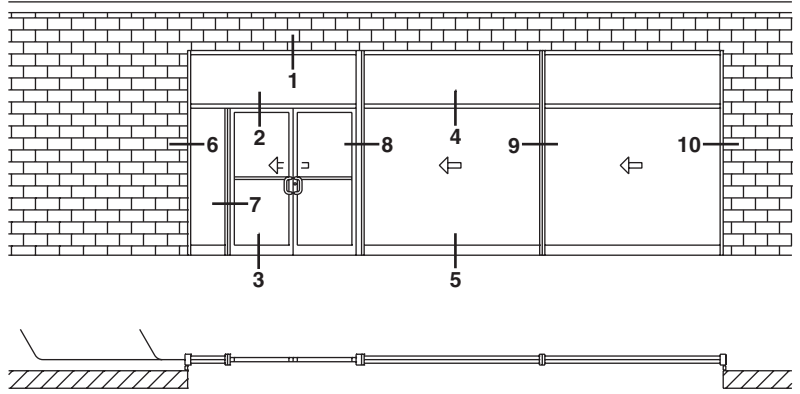
***NOTE:**

OPTIONAL WEATHERING TRIM CAN BE USED AT THE INTERIOR WITH STRAIGHT PANEL RUNS ONLY.

MAXIMUM ALLOWABLE STRUCTURAL DEFLECTION 1/4" (6.4).

ENTRANCES CANNOT BE BUILT WITHOUT TRANSOM LITE. TRANSOM LITE MUST BE A MINIMUM OF 12" (305) HIGH.

PROPER SUPPORT MUST BE PROVIDED FOR FLOOR AND HEAD TRACK INCLUDING THE STACK AREA.



Drain connections to 60-110 to be by others 1" (25.4) to 1-1/4" (31.8) O.D. drain tubing recommended every 15' (4.572 meters) and at each end.

Laws and building and safety codes governing the design and use of glazed entrance, window, and curtain wall products vary widely. Kawneer does not control the selection of product configurations, operating hardware, or glazing materials, and assumes no responsibility therefor.

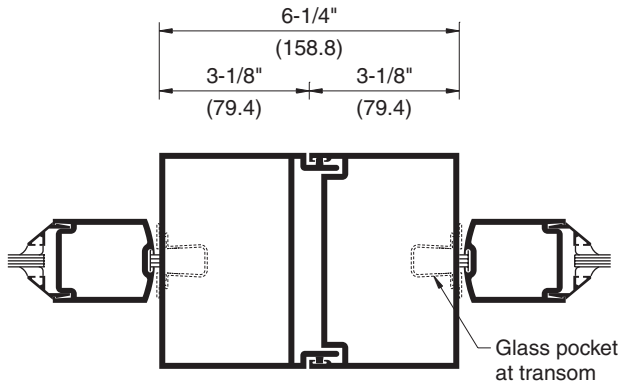
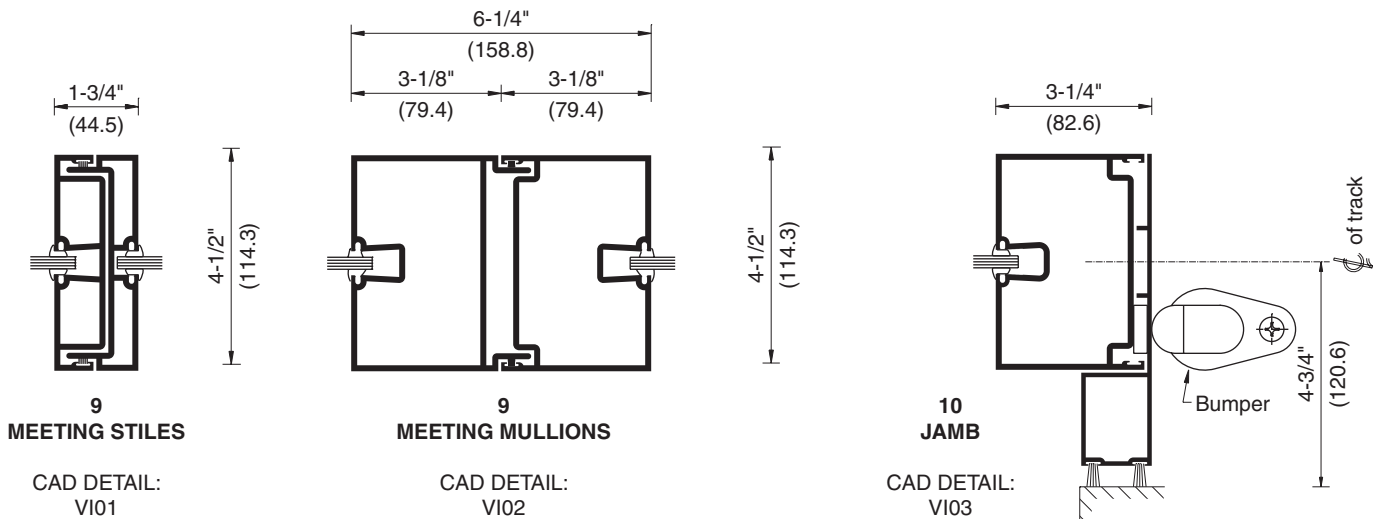
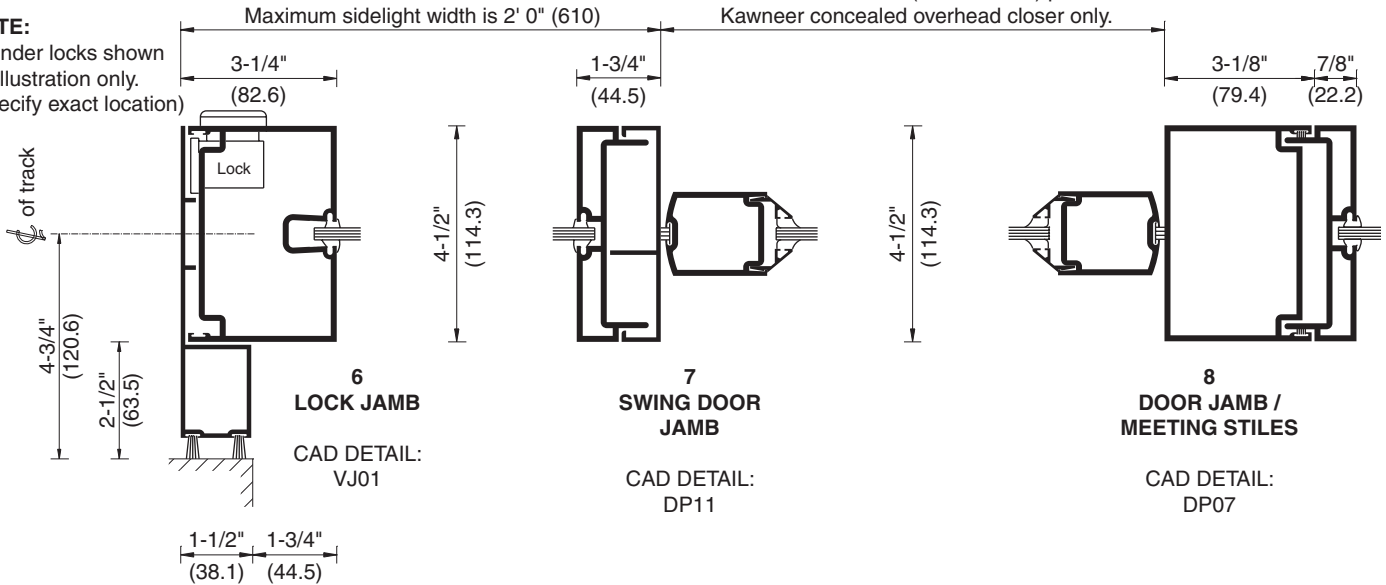
Kawneer reserves the right to change configuration without prior notice when deemed necessary for product improvement.

© Kawneer Company, Inc., 2008

SCALE 3" = 1'-0"

Entrances are 6' 0" x 7' 0" (1828 x 2134) pair of doors.
Kawneer concealed overhead closer only.

NOTE:
Cylinder locks shown for illustration only.
(Specify exact location)



(OPTIONAL CONDITIONS WHEN TWO ENTRANCE PANELS MEET)

MEETING MULLIONS

CAD DETAIL:
PD08

Laws and building and safety codes governing the design and use of glazed entrance, window, and curtain wall products vary widely. Kawneer does not control the selection of product configurations, operating hardware, or glazing materials, and assumes no responsibility therefor.

Kawneer reserves the right to change configuration without prior notice when deemed necessary for product improvement.
© Kawneer Company, Inc., 2008

SCALE 3" = 1'-0"

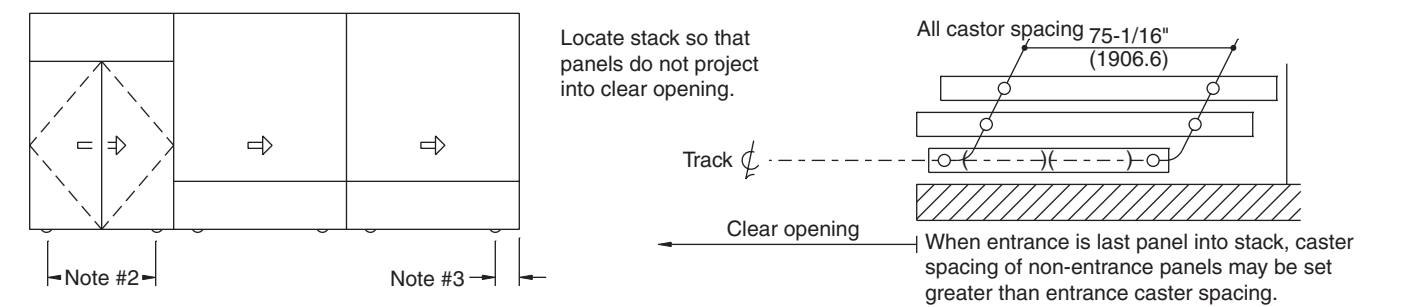
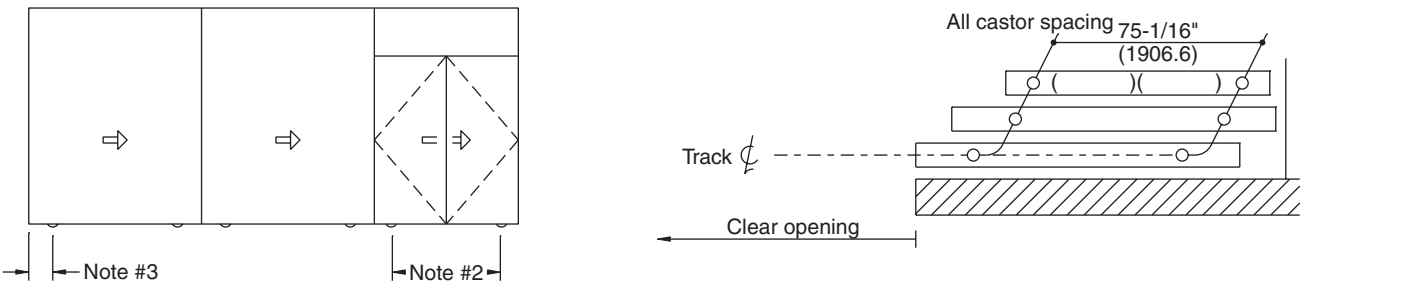
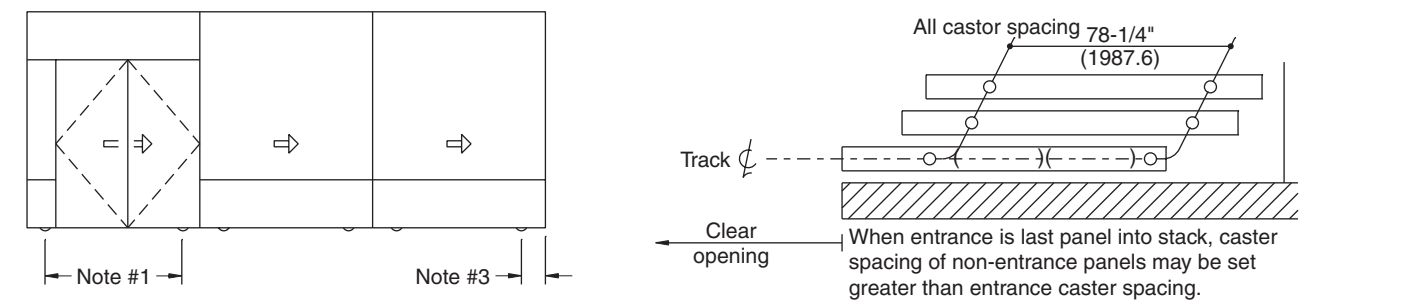
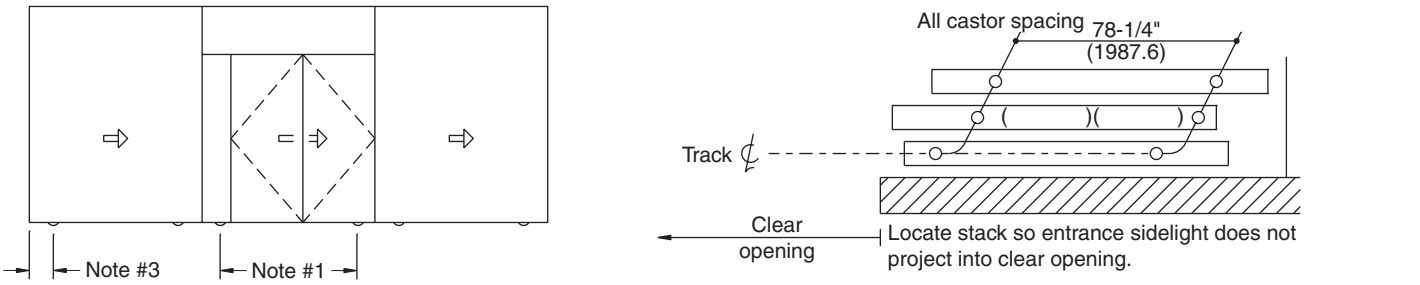
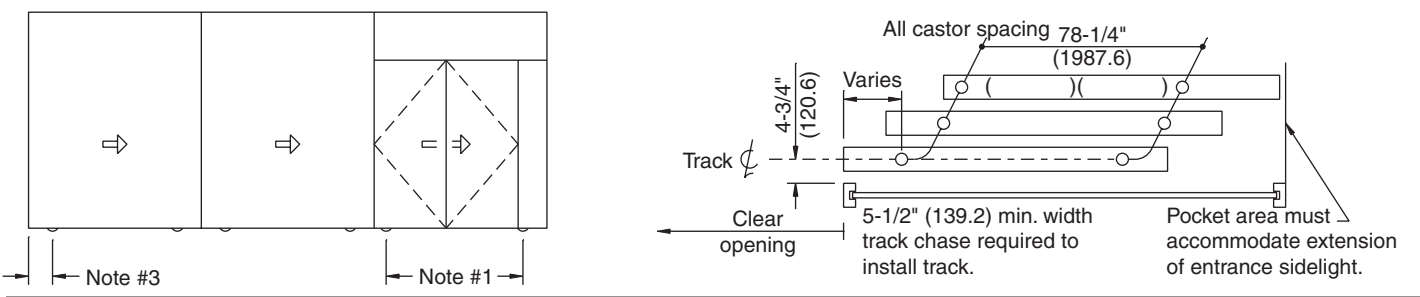
Basic considerations for door detailing sliding wall arrangements and stacking sequence.

1. Caster spacing for 6' 0" entrances with sidelite may not vary from standard dimensions of 78-1/4" (1987.6).
2. Caster spacing for 6' 0" entrances without sidelite may not vary from standard dimensions of 75-1/16" (1906.6).
3. Minimum locations of caster center line from end of bottom horizontal is 3" (76.2) actual location depends on entrance unit wheel spacing and non-entrance panel detailed width.
4. 1070 stacking is only as shown. Pocket dimensions depend on panel width and position in stack.
5. Parallel stacking only.

Note: Size and location of chase in floor cannot usually be determined until job is detailed.

Laws and building and safety codes governing the design and use of glazed entrance, window, and curtain wall products vary widely. Kawneer does not control the selection of product configurations, operating hardware, or glazing materials, and assumes no responsibility therefor.

Kawneer reserves the right to change configuration without prior notice when deemed necessary for product improvement.
© Kawneer Company, Inc., 2008



SCALE 3" = 1'-0"

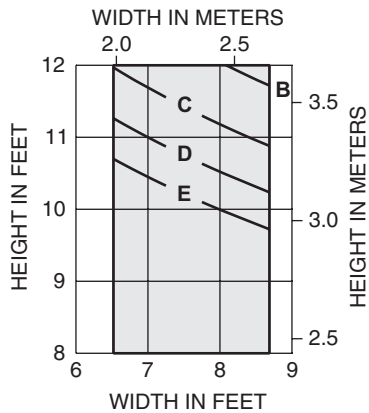
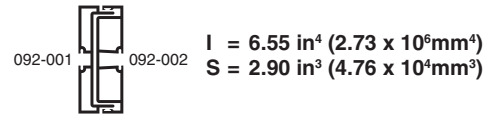
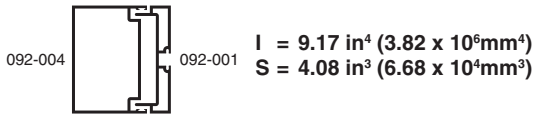
PANEL SIZE LIMITATIONS

Mullions are designed for L/175 deflection ratio. These curves are for mullions with horizontals and are based on engineering calculations for stress, deflection and buckling. Allowable windload stress for ALUMINUM 12,929 PSI (89 MPa). Charted curves, in all cases are for the limiting value. For special situations not covered by these curves, contact your Kawneer representative for additional information.

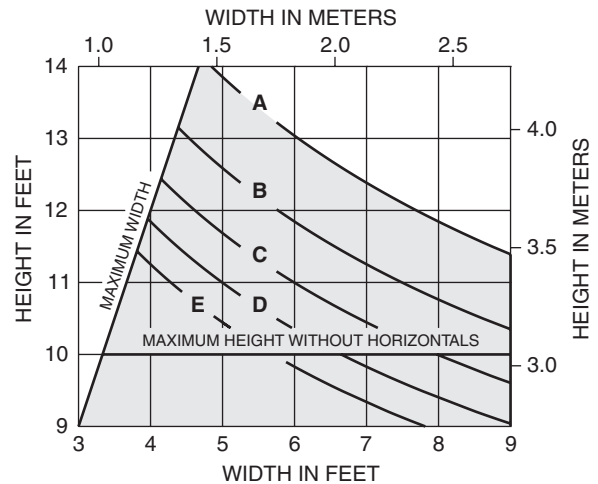
(Note: Calculations are in accordance with the National Building Code of Canada based on CAN3-S157 "Strength Design in Aluminum".)

EXTERIOR APPLICATION WITH ENTRANCES

EXTERIOR APPLICATION WITHOUT ENTRANCES



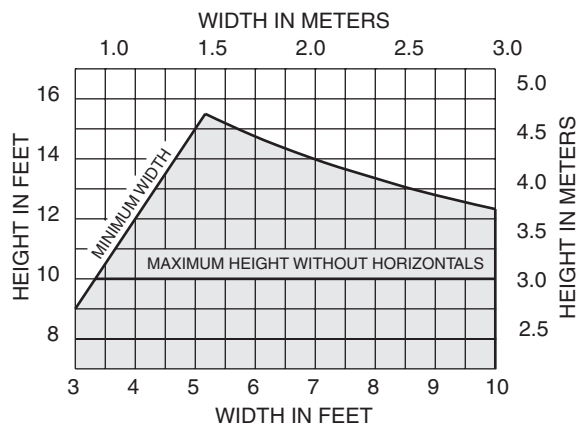
- A = 15 p.s.f. (0.72 kPa.)
- B = 20 p.s.f. (0.96 kPa.)
- C = 25 p.s.f. (1.20 kPa.)
- D = 30 p.s.f. (1.44 kPa.)
- E = 35 p.s.f. (1.68 kPa.)



Minimum panel width with entrances 6' 6-1/4" (1988)
 Minimum panel height with entrances 8' 0" (2438)
 Maximum panel width with entrances 8' 8-1/4" (2648)*
 Maximum panel height with entrances 12' 0" (3658)*

NOTE: * Only with a design load of 15 p.s.f. (720 Pa.) can a panel be the maximum width and height. For higher design loads, the panel must be limited to the curves B, C, D, and E in the graph above.

INTERIOR APPLICATION ONLY

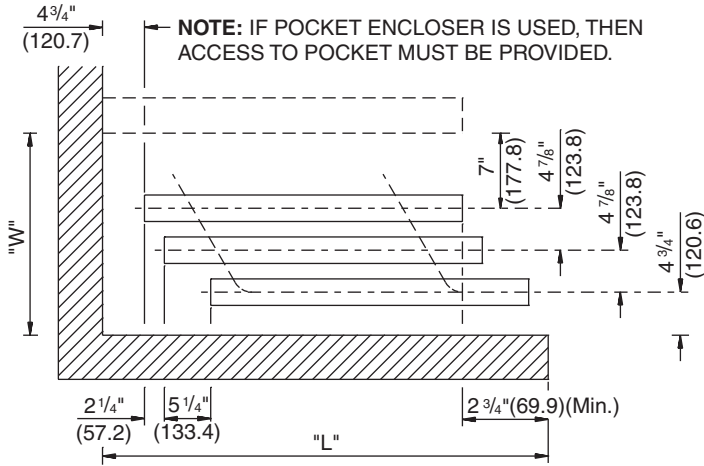


Laws and building and safety codes governing the design and use of glazed entrance, window, and curtain wall products vary widely. Kawneer does not control the selection of product configurations, operating hardware, or glazing materials, and assumes no responsibility therefor.

Kawneer reserves the right to change configuration without prior notice when deemed necessary for product improvement.
 © Kawneer Company, Inc., 2008

STACK AREA LAYOUT

(For units with entrance doors.)



PARALLEL STAGGERED STACK

Minimum "L" = Panel width + 10" (254) + {2-1/4" (57) x (number of panels - 2)}.

Minimum "W" = 11-11/16" (296.9) + {4-7/8" (123.8) x (number of panels - 1)}.

NOTE: STACK AREA MUST HAVE ADEQUATE SUPPORT FOR THE PANEL WEIGHT.

HARDWARE STANDARDS

SLIDING PANELS (LOCKS)

- ADAMS RITE MS-1873 Floor Bolt

ENTRANCE DOORS

- Architect's Classic Push/Pulls
- ADAMS RITE MS-1850A deadlock
- Top and bottom flush bolts
- Thresholds
- Concealed overhead closers

PRODUCT LIMITATIONS

- Swing doors in "1070" panels are restricted to:
 - 6' x 7' (1828.8 x 2133.6) pair of Kawneer doors with standard MS locks only.
 - Center hung with concealed overhead closer only.
Double acting can be made single acting by use of door stop on transom bar.
 - The following Push-Pull Hardware Styles are the only ones applicable with the "1070" swing doors:
 - Architect's Classic Style CO-9/CP
 - Architect's Classic Style CO-12/CP
 - Architect's Classic Style CPCP
 - Architect's Classic Style CO-9/CO-9
 - Architect's Classic Style CO-12/CO-12
- Total height of panels with swing doors must be minimum of 8'-0" (2438.4) which is a 7'-0" (2133.6) pair of doors plus a transom height of 1'-0" (304.8) minimum.
- Parallel staggered stacking only.
- Drain pipes from drain track not by Kawneer.
- Sidelite to swing doors - maximum width 2'-0" (609.6).
- "1070" will accept flush glazed 1/4" (6.4) glass or panel only.

GENERAL INFORMATION

General Description: The "1070" sliding front consists of single trackage with parallel stacking of exterior and interior applications. Because the "1070" incorporates swing entrances, it is ideally suited for the following monumental and commercial applications:

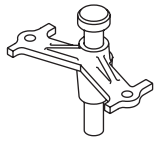
- Entrances to shopping malls
- Large movable walls
- Movable storefronts
- Automobile showrooms
- Seasonal open front merchandising

Laws and building and safety codes governing the design and use of glazed entrance, window, and curtain wall products vary widely. Kawneer does not control the selection of product configurations, operating hardware, or glazing materials, and assumes no responsibility therefor.

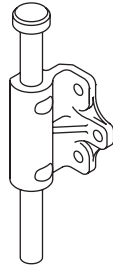
Kawneer reserves the right to change configuration without prior notice when deemed necessary for product improvement.

© Kawneer Company, Inc., 2008

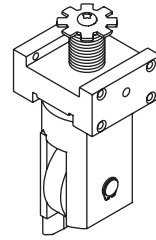
1070 HARDWARE



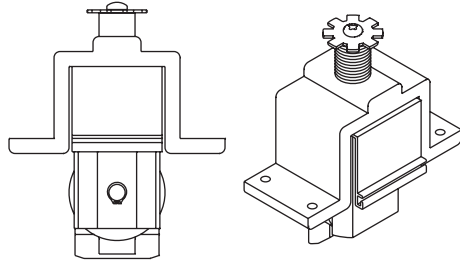
INBOARD HEAD GUIDE



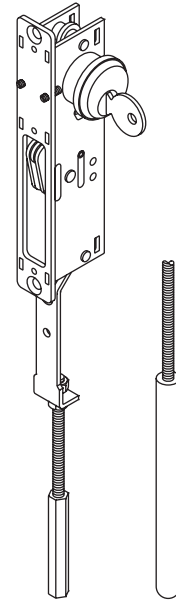
RECESSED HEAD GUIDE



RECESSED CASTER



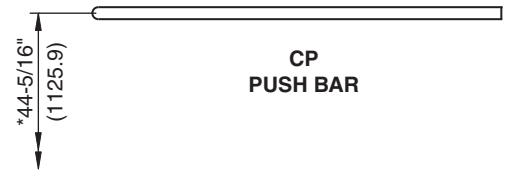
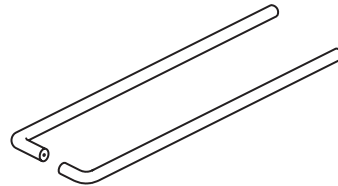
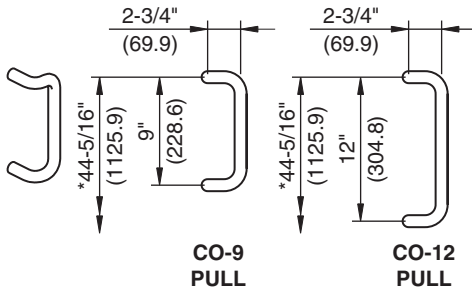
INBOARD CASTER



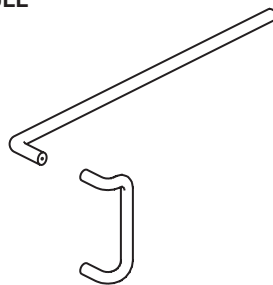
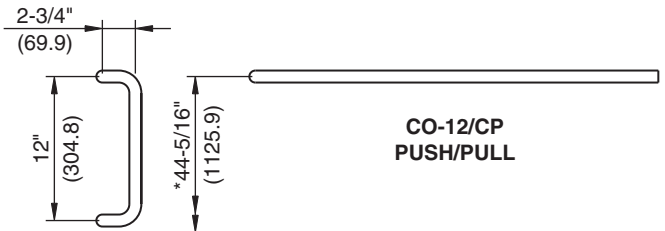
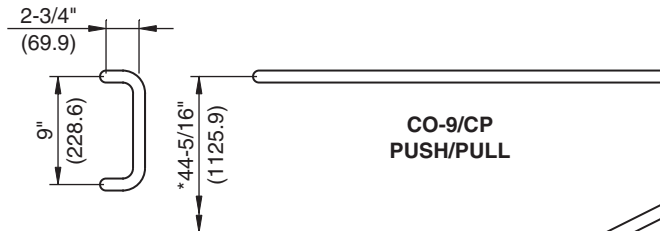
MS 1873 LOCK

SWING ENTRANCE DOOR
PUSH/PULL HARDWARE

REFER TO HARDWARE SECTION FOR ADDITIONAL INFORMATION



NOTE: * DIMENSIONS ARE FROM BOTTOM OF DOOR TO ATTACHMENT POINT.



Finishes: Architect's Classic Push/Pull Hardware are available in the following finishes:

#14 Clear, #29 Black and #40 Dark Bronze Anodized.

#44 Bronze - US 10B oil rubbed, #45 Stainless Steel - US32 polished, #46 Stainless Steel - US32D dull and #47 Bright Brass (PVD) - US3.