

Tool & Product Update

Model 941 POWERIG® Hydraulic Unit Reinforcing Strap Kit, P/N 115481

Reinforcing Strap Kit, P/N 115481, when installed, prevents directional valve and capacitor assembly from being damaged—the weight of the hydraulic hoses pulling on quick disconnect hydraulic couplers causes directional valve bracket to bend.

CAUTION

Do not pull on hydraulic unit hoses to move Model 941. Pulling on hoses will cause damage to directional valve bracket assembly.

To attach straps:

1. Remove engine mounting screw, P/N 500202, and washer, P/N 500194, closest to the solenoid—use 3/8 hex key. Loosely attach Strap (1) to engine mount with angle pointing up. See Figure 3. Push Screw (2) thru Lockwasher (3) and screw into tapped hole provided in directional valve. Tighten both screws.

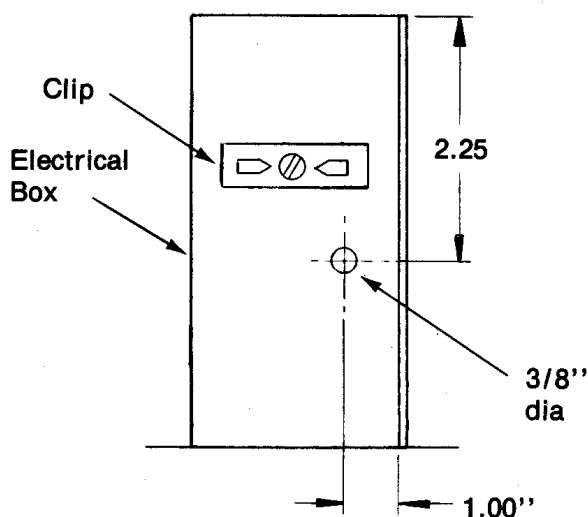


Figure 1

2. Open electrical box. Remove capacitor from clip. Drill 5/16" dia. hole in electrical box. See Figure 1 for hole location.
3. Remove engine mounting screw, P/N 500202, and washer, P/N 500194, nearest electrical box. Use 3/8 in. hex key. Loosely attach second Strap (1) to engine mount with angle pointing down. See Figure 2. Attach angled end of strap to electrical box using Screw (4), Lockwasher (5) and Nut (6). Tighten screws.
4. Re-install capacitor.

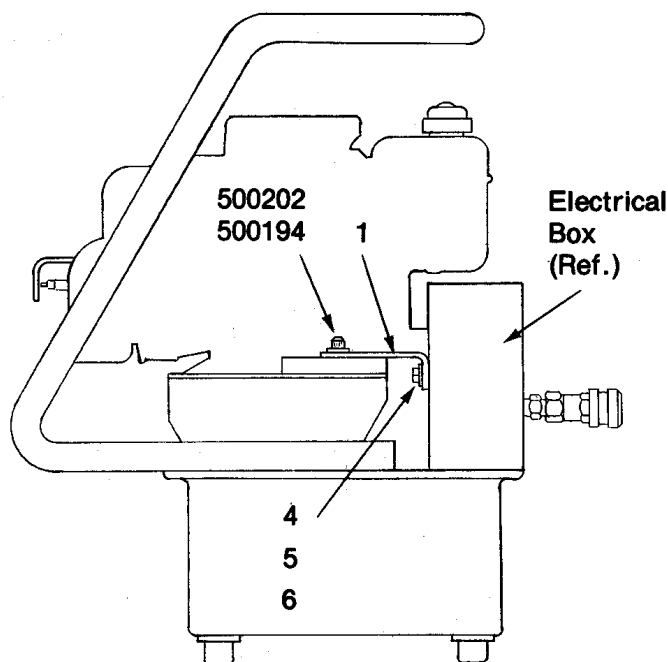


Figure 2

See other side of this
sheet for Figure 3
and Parts List

Date 6-15-84

No. 227

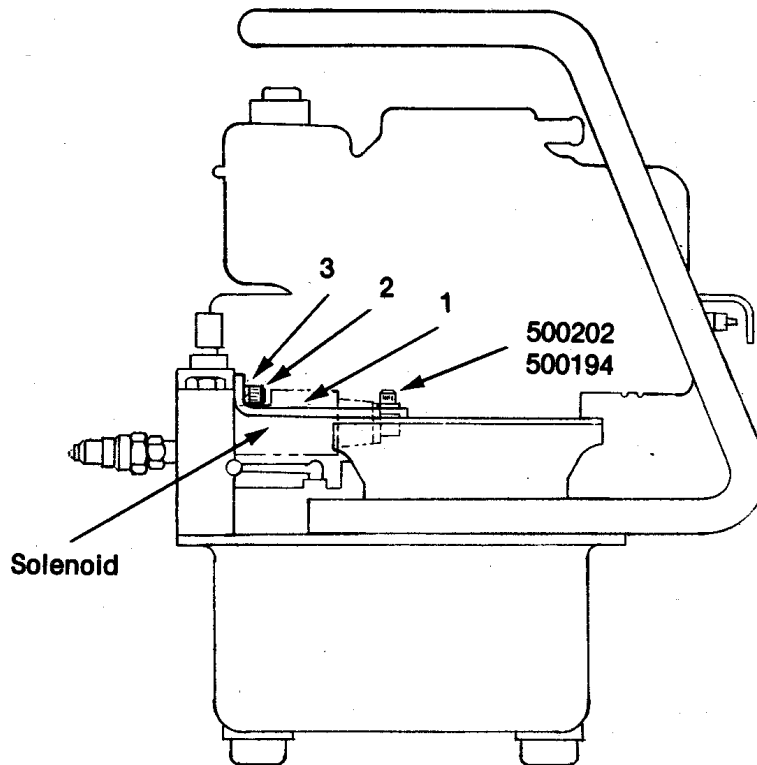


Figure 3

Kit, P/N 115481, Parts List

Ref. No.	Part No.	Req. No.	Description
1	114866	2	Straps
2	500079	1	Socket Hd. Cap Screw—5/16-18 x 3/4 long
3	500194	1	Lockwasher—for 5/16 screw
4	500003	1	Hex Hd. Screw—1/4-20 x 3/4 long
5	500193	1	Lockwasher—for 1/4 screw
6	500215	1	Hex Nut—1/4 x 20