

Technical Bulletin

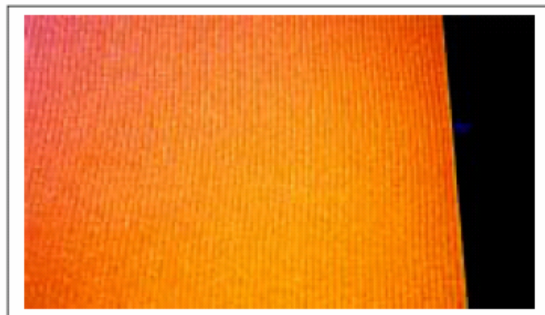
Drawdown Lines in Custom Color Matched Samples.

Custom color samples provided by Alcoa Architectural Products will contain drawdown lines when they are provided by any of our paint vendors. Drawdown lines are the small parallel lines seen on samples that are a result of the application methods utilized by the laboratories at the paint manufacturers. A wire is wrapped around metal rods that apply the paint in order to achieve a consistent thickness of paint. This application method creates the small parallel lines when the paint is drawn down the panel.

The drawdown lines will not appear on the painted coil since the paint is applied to the metal coil by a polyurethane roll turning in the opposite direction of the metal. The reverse roll coater will apply a smooth and uniform thickness of coating to the metal. This application cannot be duplicated in the labs. Similarly, the drawdown lines in the lab prepared samples cannot be duplicated on the painted coils.

This practice is an industry standard for all coil coating finishes. For further information, please contact your Alcoa Architectural Products sales manager.

Picture 1: Parallel lines in lab prepared panel.



Picture 2: Drawdown Rod

